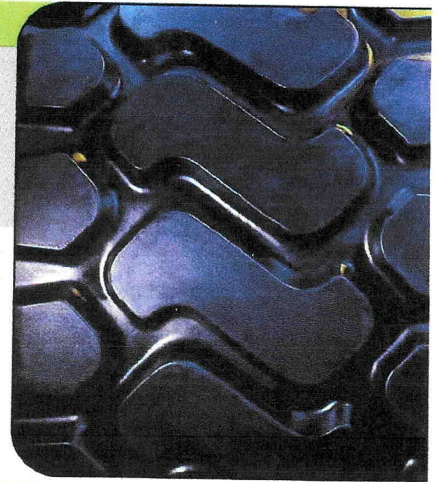


C1040 E3/L3

Expect superior performance out of this flexible tread design. Molded from a proven, tough compound, use this tread for loaders, dozers, graders, articulated dump trucks, and similar construction and material handling applications.

Size	Base Width (inches)	Tread Depth (inches)	Order Number
17.5	15-3/8	35/32	C1040-175
20.5	18-1/2	39/32	C1040-205
23.5	20-9/16	42/32	C1040-235
26.5	24	47/32	C1040-265



New, Innovative Design

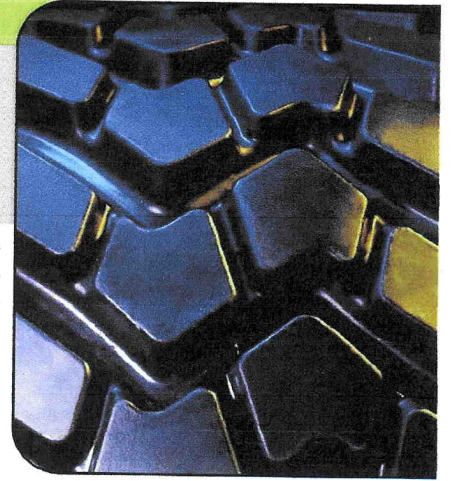
The serpentine ends on the tread segment means there is no need to splice.



C1070 E4

Get superior traction when you need it. Molded from a tough compound and an aggressive lug pattern, this tread performs well on articulated dump trucks, loaders, dozers, graders and similar applications.

Size	Base Width (inches)	Tread Depth (inches)	Order Number
23.5	20-9/16	44/32	C1070-235
26.5	24	48/32	C1070-265
29.5	26	53/32	C1070-295



New, Innovative Design

The serpentine ends on the tread segment means there is no need to splice.

C1072 E4 (VMT)

Get superior traction when you need it. Molded from a tough compound and an aggressive lug pattern, this tread performs well on articulated dump trucks, loaders, dozers, graders and similar applications.

Size	Base Width (inches)	Tread Depth (inches)	Order Number
17.5	15-3/8	38/32	COMING SOON CALL
20.5	18.5	42/32	COMING SOON CALL
23.5	20-9/16	44/32	C1072-23.5
26.5	24	48/32	C1072-26.5
29.5	26	53/32	C1072-29.5



New, Innovative Design

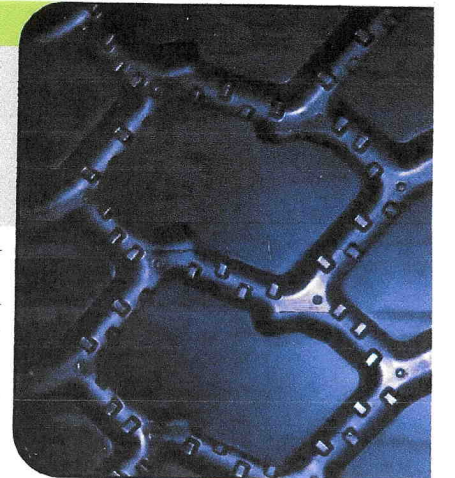
The serpentine ends on the tread segment means there is no need to splice.

C1073 E4 (VMTP)

Get superior traction when you need it. Molded from a tough compound and an aggressive lug pattern, this tread performs well on rigid dump trucks.

Coming soon in 1800R33 and 1800R25.

Size	Base Width (inches)	Tread Depth (inches)	Segment Lgth (inches)	Segment Weight (lbs)	Segments Per Skid	Weight Per Skid (lbs)	Tires Per Skid	Order Number
18	17-3/4	64/32						COMING SOON CALL
21	20-1/4	64/32						C1073-21
24	22-5/8	64/32						C1073-24
27	26-1/2	64/32						C1073-27



New, Innovative Design

The serpentine ends on the tread segment means there is no need to splice.

McDonald Tire Company
 4130 S. Loop 1604 E.
 San Antonio, Texas 78264
 Phone: (210) 621-0808
 Toll: 1-866-OTR-TIRE (687-8473)
 Fax: (210) 621-0866
 E-Mail: info@mcdonaldtire.com